

# V8 Eco Series

## Catalogue

SMART IN ONE



Midea Building Technologies Division  
Midea Group

Add.: Midea Headquarters Building, 6 Midea Avenue, Shunde, Foshan, Guangdong, China  
Postal code: 528311

mbt.midea.com    www.midea-group.com    tsp.midea.com

Midea reserves the right to change the specifications of the product, and to withdraw or replace products without prior notification or public announcement. Midea is constantly developing and improving its products.



2023

MAKE A BEAUTIFUL TOMORROW

# Midea MBT

Midea MBT(Midea Building Technologies) is a key division of the Midea Group, a leading provider of comprehensive solutions of intelligent building, involving energy sources, elevators, control systems, and heating, ventilation & air conditioning. Midea MBT has continued with the tradition of innovation upon which it was founded and emerged as a global leader in the HVAC and building management industry. A strong drive for advancement has resulted in an extensive R&D department that has placed Midea MBT at the forefront of a competitive -edge. Through these independent projects and joint-cooperation with other global enterprises, Midea has supplied thousands of innovative solutions to customers worldwide.



Several production bases are situated on Shunde, Chongqing, Hefei, and Italy.

MBT Shunde: 38 product lines focusing on VRF, Split Products, Heat Pump Water Heaters and AHU/FCU.

MBT Chongqing: 14 product lines focusing on Water Cooled Centrifugal/Screw/Scroll Chillers, Air Cooled Screw/Scroll Chillers and AHU/FCU.

MBT Hefei: 11 product lines focusing on VRF, Chillers and Heat Pump Water Heaters.

Clivet S.p.A: 50,000m2 workshop in Feltre and Verona, covering products such as ELFO system, hydronic, WHLP, packaged, split and close control and so on.





# Application Solutions

## Office Complexes

*Enjoy comfort while working*

### High-rise office building



### Small and medium-sized office buildings



Be it small or large sized, Midea VRF provides solution for all office buildings and its smart control solutions makes the management of VRF simple and easy whereas the wide variety of indoor units are suitable for all designs.

## Hotels & Shopping Malls

*Increase your business, not your bills*

### Shopping Malls



### Retails



### Hotel



The high efficiency and reliability of Midea VRF makes it suitable to be used for all commercial applications. The intelligent control solutions like hotel key cards and touch screen controller makes the management easy

## Residential Apartments

*One for Every home*

### Apartments



### Villas

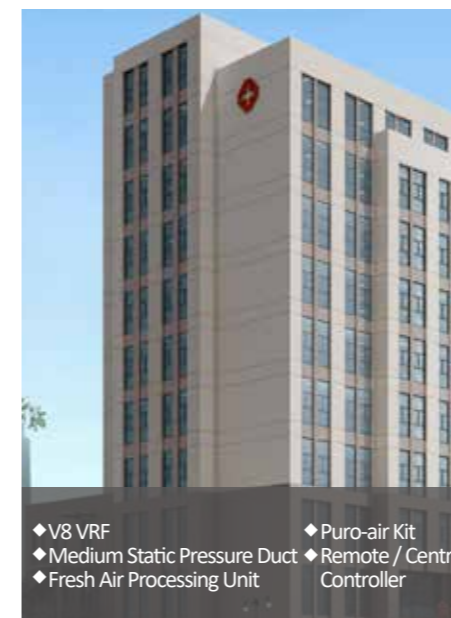


The compact size and high efficiency make Midea VRF suitable for all residential homes.

## Other Applications

*Meeting all expectations*

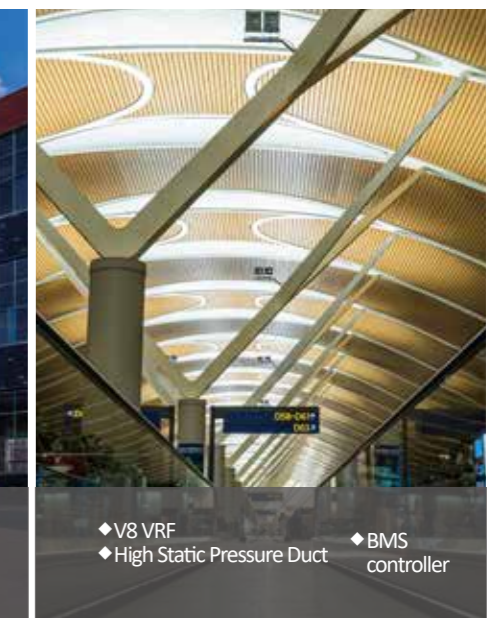
### Hospitals



### Schools



### Airports



The innovative design and a variety of indoor unit choices makes Midea VRF suitable for all kinds of applications. The newly designed puro-air kit is a must have product for modern hospitals.

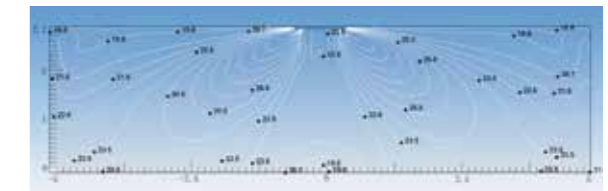
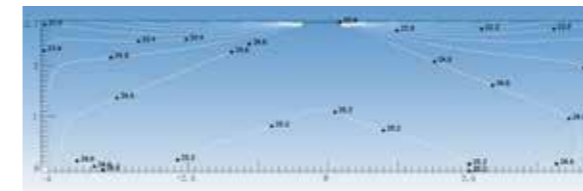
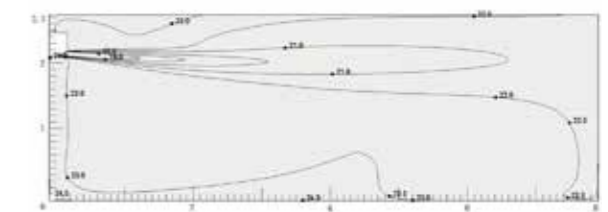
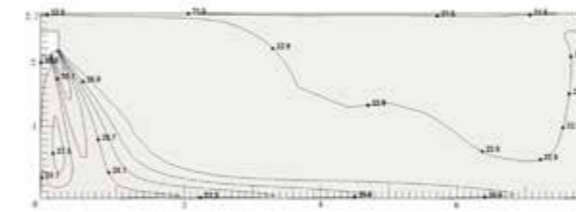


## Simulation

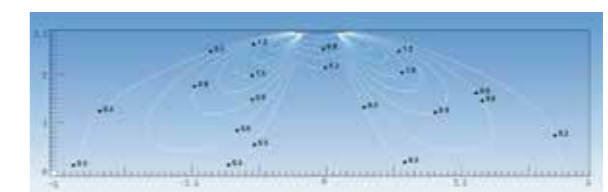
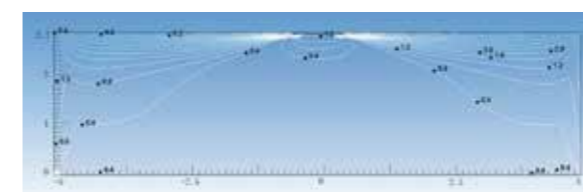
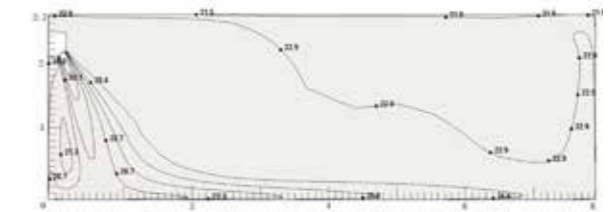
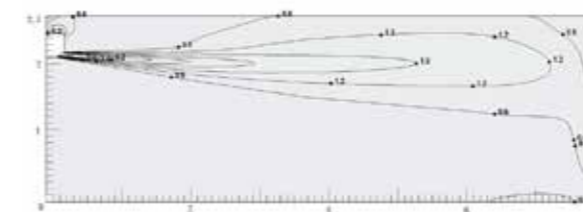
### CFD (Computational Fluid Dynamics)

CFD Analysis is applied in areas of estimating: indoor airflow and temperature distribution. By running a simulation before construction, engineers estimate possible issues and find optimal solutions of malfunction that could occur after construction.

#### Temperature distribution



#### Airflow distribution



# Engineering Capability Midea Tool and Support

Midea dedicated to provide the best HVAC engineering support and solutions focused on effectively designed, built, supervised, and maintained throughout the lifecycle, providing our customers a faster, easier, and a more accurate way in everyday duties.



## Design

### MSSP-Drag/Drop Design

MSSP-Drag/Drop design enables an easy and quick selection and provides comprehensive system design reports and calculations.

*Note: MSSP (Midea Selection Software Platform)*



### MSSP-CAD Design

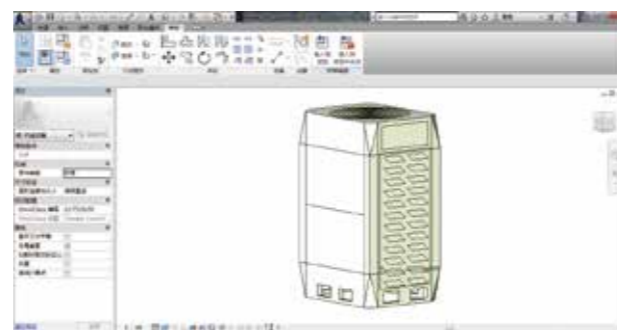
MSSP-CAD design enables an visual and fast selection and provides comprehensive system design reports and calculations.

*Note: MSSP (Midea Selection Software Platform)*



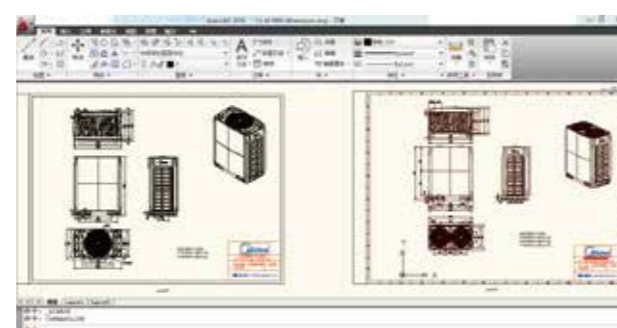
### Revit Family

Midea revit is developed to make 3D design of Midea products easier than the previous program. It enables engineers to check 3D images from design stage and prevents possible issues of the installation stage.



### CAD Drawing

CAD enables faster and a more accurate design of Midea products.



# Midea Global Spare Parts Center

The global spare parts center provides high quality and fast spare parts supply. Midea online system (<https://tsp.midea.com>) can query and purchase spare parts with one click, further shortening the supply time of spare parts.



The “2 (HQ Spare parts center) +10 (Regional Spare parts center) +N “(Country Spare parts inventory)” Spare Parts Layout can ensure the timely supply of global after-sales spare parts.



# OUTDOOR UNITS

V8 (Combinable series)  
V8i (Individual series)

## Outdoor Unit Lineup

### V8 - Combinable Series



Note: Four units combination are possible for the 8-24 HP models, for four units combination please contact Midea.

### V8i - Individual Series



# Outdoor Unit Functions

Functions		VRF V8	VRF V8i
Innovative Technology	ShieldBox	●	●
	SuperSense	●	●
	Meta 2.0	●	●
	Zen air 2.0	●	●
	Doctor M 2.0	●	●
High Efficiency	Full DC inverter technology	●	●
	Enhanced Vapor Injection (EVI) compressor	●	●
	Micro-channel refrigerant subcooling	●	●
	Low standby power consumption	●	●
	G-type heat exchanger	●	●
	60-step energy management	●	●
	Duty cycling (unit)	●	X
High Reliability	Duty cycling (compressor)	●	●
	Backup operation (unit)	●	X
	Backup operation (compressor)	●	●
	Backup operation (fan motor)	●	●
	Backup operation (sensor)	●	●
	Precise oil control	●	●
	Heavy anti-corrosion protection	○	○
	UL anti-corrosion certificate	○	○
	Micro-channel refrigerant cooling PCB	●	●
	Chassis electrical heater	○	○
	Anti-snow shield	○	○
	Auto snow-blowing function	●	●
	Auto dust-clean function	●	●
	Resistant to 8 intensity earthquake	○	○
	Resistant to violent typhoon	○	○
	Alarm output	○	○
	Fire alarm input	●	●

Functions		VRF V8	VRF V8i
Enhanced Comfort	Silent mode	●	●
	Intelligent defrosting technology	●	●
	Auto cooling-heating changeover	●	●
	Continuous heating in oil return mode	●	●
	Additional ambient temperature sensor	○	○
	0.1°C control precision	●	●
	Multiple priority modes	●	●
Wide Application	Wide capacity range	8-36HP (single) 38-108HP (combined)	8-36HP
	Wide range of indoor units	●	●
	Wide operation range	-15~55°C (C) -30~30°C (H)	-15~55°C (C) -30~30°C (H)
	Long piping capability	●	●
Easy Installation and Service	Auto addressing (ODU~IDU)	●	●
	Auto addressing (ODU~ODU)	●	X
	Automatic refrigerant charging	○	○
	Automatic refrigerant recycling	●	●
	Bluetooth module	○	○
	Digit display	●	●
	High external static pressure	0-20Pa ● 20-80Pa ○	0-20Pa ● 20-80Pa ○
	2-core non-polarity communication wiring between IDU~ODU (P Q communication)	●	●
	Long communication wiring	●	●
	Wide combination ratio	50-130% ● 50-150% (for single unit system) ○	50-130% ● 50-150% ○
	Supports manual and automatic defrosting	●	●
	Supports manual and automatic oil return	●	●
	Easy software program upgrade*1	●	●
Flexible controller connection	●	●	
Refrigerant amount diagnosis	●	●	
Easy system commissioning and checking*1	●	●	
Intelligent maintenance tool	○	○	

Note:  
 ●: equipped as standard; ○: customization option; X: without this function  
 \*1: The web function needs to be realized through the data cloud gateway, and the data cloud gateway needs to be purchased separately.

### 5 INNOVATIVE TECHNOLOGIES



IP55 fully enclosed electric control box provides all-round protection for internal electronic components, greatly improving system **RELIABILITY**.



Anti-corrosion



Dustproof

**I P 5 5**

**5** Dustproof grade code  
Prevent entry foreign objects and dust



Rain & snow proof



Insect proof

**5** Waterproof grade code  
Prevent water spray in all directions

#### All Microchannel Refrigerant Cooling

All electronic components including inverter module, filter module and power module are cooled by specially designed microchannel refrigerant to ensure that the electronic components work in the best temperature range.



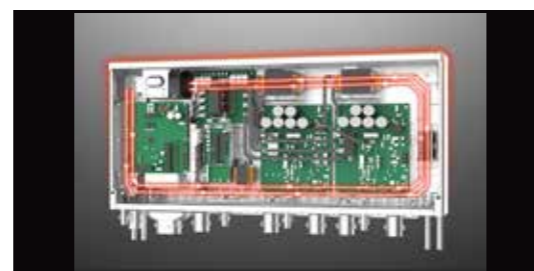
#### Built-in Circulating Fan

The built-in circulating fan accelerates the air flow inside the chamber, and the heat exchange is more sufficient to ensure the consistent ambient temperature inside the chamber.



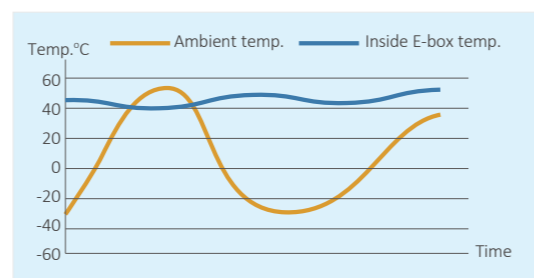
#### PTC Heater

The unique PTC heater, with precise temperature control sensor, can still ensure that the temperature inside the chamber is within the normal operating temperature range of electronic devices even in the low-temperature environment of -30°C.



#### 5 High Precision Temperature Sensors

5 high precision temperature sensors are used to accurately monitor the operation state of electronic control under various conditions to ensure that the internal temperature of the chamber is always kept within a stable range.

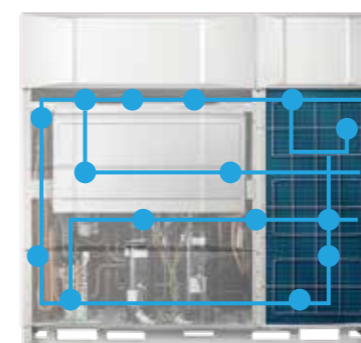


The status of the refrigerant is known anywhere throughout the process, ensuring high **RELIABILITY** and **COMFORT**.



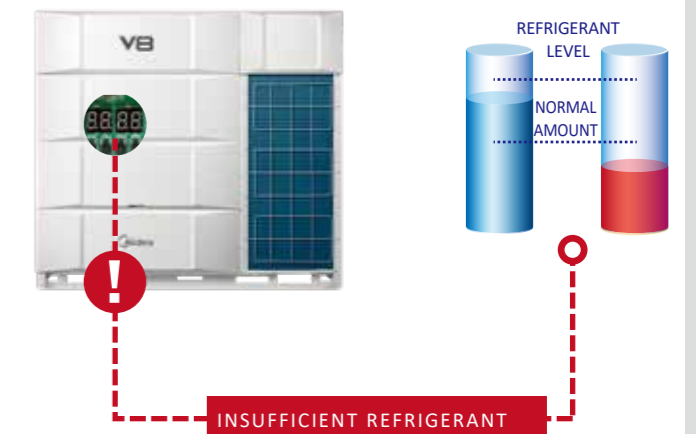
#### Complete Sensors

The V8 Series VRF has the industry's most comprehensive range of 19 condition sensors with built-in data models for compressors, heat exchangers, throttling components and more. By analyzing sensor data in real time, it can sense the status of the refrigerant anywhere in the system.



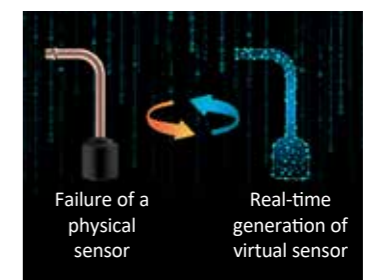
#### Refrigerant Amount Diagnosis

Thanks to the complete sensors, the refrigerant running state is clearly visible, so as to accurately diagnose the amount of refrigerant.



#### Virtual Sensor Backup

In the event of a sensor failure, other sensors can automatically simulate a virtual backup sensor, so that the VRF system can continue to operate without stopping.



Midea ETA (META) is the abbreviation of Midea Evaporating Temperature Alteration  
Further upgraded META technology to maximize **ENERGY SAVING**.



Variable Refrigerant Flow

**STEP 1: Architectural space feature recognition**

The indoor unit automatically recognizes the size of the building space and the effectiveness of the insulation according to the rate of temperature drop.



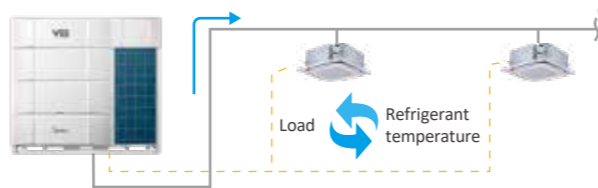
Automatic calculation of the building load and the required refrigerant quantity based on the sensor parameters.



Variable Refrigerant Temperature

**STEP 2: System refrigerant temperature determination**

The system automatically matches the evaporating temperature (in cooling) or condensing temperature (in heating) to the room load to maximize comfort and energy efficiency.



Automatic matching of the corresponding refrigerant temperature to the load.



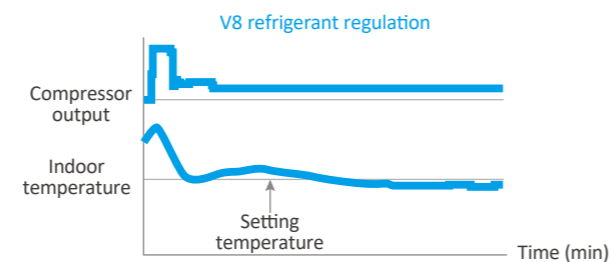
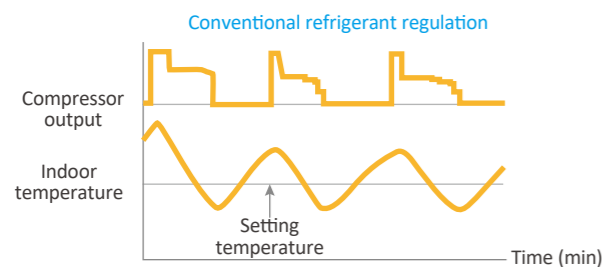
Variable Indoor Airflow

**STEP 3: Adaptive indoor airflow and refrigerant flow**

Each indoor unit automatically adjusts the corresponding indoor airflow and refrigerant flow according to the evaporating/condensing temperature, enabling precise temperature control.



Automatic matching of the corresponding indoor airflow to the load and refrigerant temperature.

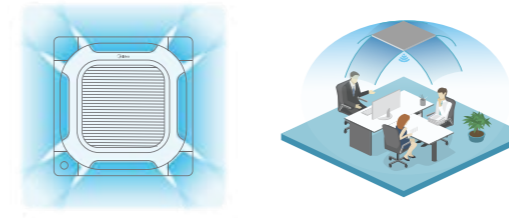


Further upgraded ZEN AIR technology to maximize **COMFORT**.



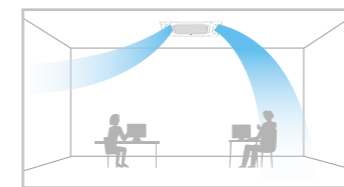
**360° Airflow**

New design, round air flow path ensures uniform air flow and temperature distribution.



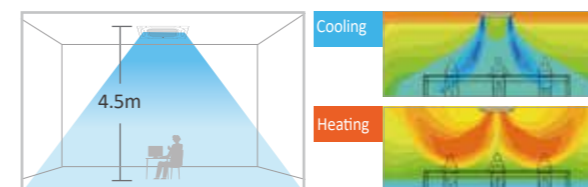
**Individual Louver Control**

The Individual louver control can control the motors separately, making it possible to control all four louvers independently.



**Long Distance Air Delivery\***

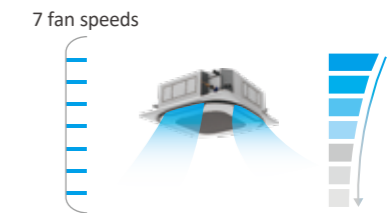
The Four-way Cassette has an additional 50Pa static pressure for long airflow delivery and is capable of being used in spaces up to 4.5m in floor height.



\*This function is available as a customization option.

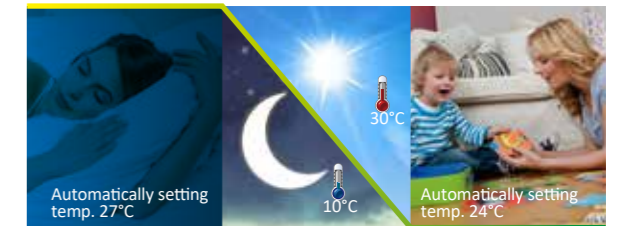
**7 Fan Speeds**

7 indoor fan speed options to meet the needs of different indoor conditions.



**Sleep Mode**

The smart sleep mode provides a comfortable sleep period and a refreshing wake up time.



\*Temperature on left is for reference.

**Innovative Puro-air Kit**

Protectors of health and safety

OSRAM From Germany - OSRAM quality UV light source

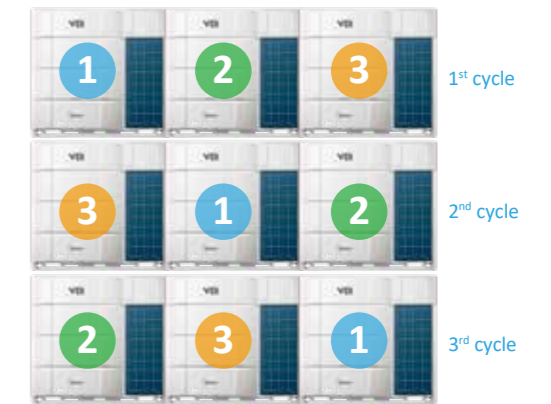
Ozone-Free UV leakage-Free

\*The indoor unit needs to be customized in order to use the Puro-air Kit.

## HIGH RELIABILITY

### Duty Cycling Unit Duty Cycling

In a multi-unit system, duty cycling equalizes the running time of each outdoor unit, significantly extending unit lifespan.



### Compressor Duty Cycling

In units with two compressors, duty cycling equalizes the running time of each compressor, significantly extending compressor lifespan.



### Precise Oil Control Technology

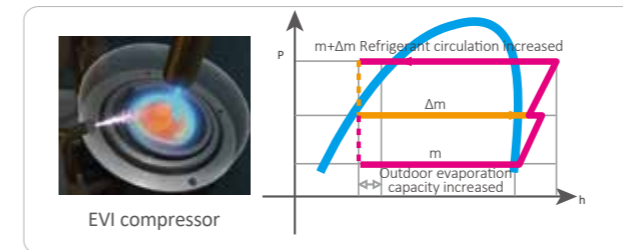
Four stages of oil control technology ensure all outdoor compressor oil is always kept at a safe level, eliminating any compressor oil shortage problems.

- 1** Compressor internal oil separation.
- 2** High-efficiency centrifugal oil separator (with separation efficiency of up to 99%) ensures that oil is separated from the discharge gas and returned to the compressors in a timely fashion.
- 3** Oil balance pipes between gas-liquid separator ensure even oil distribution to keep compressors running normally.
- 4** The automatic oil return program determines the oil return through the running time and the oil discharge amount, enabling precise oil return.

## HIGH EFFICIENCY

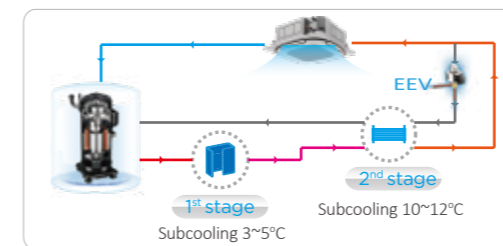
### High Efficiency Enhanced Vapor Injection (EVI) Compressor

The enhanced vapor injection DC inverter compressor increases refrigerant circulation and improves both cooling and heating capacity.



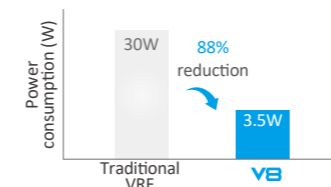
### Advanced Subcooling Technology

The V8 Series VRF uses a micro-channel heat exchanger to further cool the refrigerant and the refrigerant system can achieve 15 ° C refrigerant subcooling, which can further improve the refrigerant heat transfer efficiency while reducing the sound of refrigerant flow.



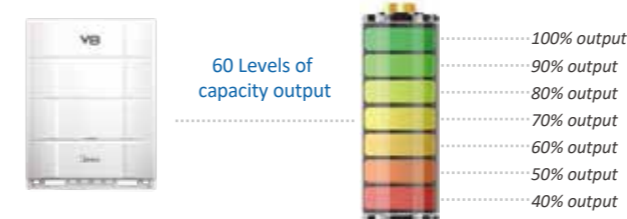
### Low Standby Power Consumption

Compared to the standby power consumption of traditional VRF of about 30W, the V8 Series VRF uses optimized control scheme to further reduce standby power consumption to as low as 3.5W.



### 60 Levels of Energy Management

For projects with temporary electricity supply restrictions, the outdoor unit supports 60-step energy management which can be set to output 40-100% capacity in 1% increments. It prevents tripping during electricity supply restriction conditions and remains system continue to operate.



## DOCTOR m. 2.0

Further upgraded DOCTOR M technology to maximize **EASY SERVICE**.



Based on a cloud-based platform of big data and artificial intelligence, the V8 Series VRF can monitor the operation status of each unit in real time, predict system faults in advance and provide data analysis for system maintenance. Intelligent Bluetooth module and special Bluetooth after-sales kit can further simplify maintenance and improve maintenance efficiency.

### Intelligent Maintenance Tool

With intelligent Bluetooth module or special Bluetooth after-sales kit, the data of the outdoor unit can be directly read and written on your smart phone without the needs of connecting PC or opening cabinet.

*\* The Bluetooth module is available as a customization option.*



### Real-time Monitoring of Operating Parameters

The V8 Series VRF synchronizes and stores all the unit parameters to the cloud through the data cloud gateway, including the running status, locking status, dirty blocking rate, all spot inspection parameters and so on. Users can query real-time and historical parameters on computers, tablets and mobile phones at any time.



### Cloud-based Big Data Analytics

Midea V8 Series VRF transmits the system operation data to the cloud in real time through the data cloud gateway, and timely reminds the system of abnormal conditions through big data analysis, helping users to proactively avoid the risk of failure that has not yet occurred and minimize hidden problems.



*\*The data cloud gateway needs to be purchased separately.*

### Quadruple Backup

#### Unit Backup

In a multi-unit system, the different units act as a backup to each other, ensuring that the system can continue to operate if one unit fails.



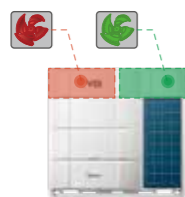
Intelligent load-bearing between units during normal operation



Continue operating in case of failure of one unit

#### Fan Backup

In unit with two fans, the two fans act as a backup to each other, ensuring that the system can continue to operate if one fan fails.



Automatic backup operation of another fan in case of failure of one fan

#### Compressor Backup

In unit with two compressors, the two compressors act as a backup to each other, ensuring that the system can continue to operate if one compressor fails.



Intelligent load-bearing between compressors during normal operation



Continue operating in case of failure of one compressor

#### Sensor Backup

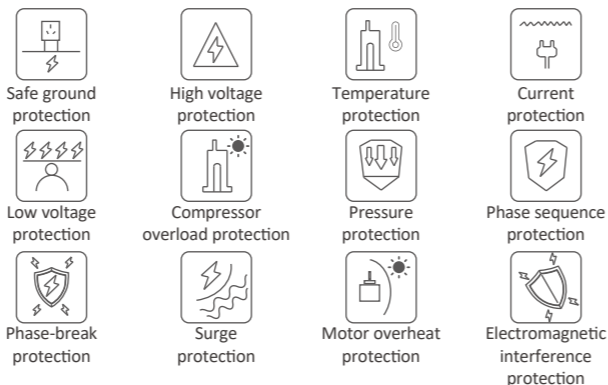
Through digital algorithms, each physical sensor generates a corresponding virtual sensor that acts as a backup to each other, ensuring that the failure of one sensor does not affect the normal operation of the system.



Automatic backup operation of the corresponding virtual sensor in case of failure of one physical sensor

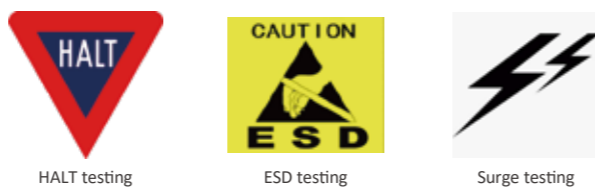
### Multiple Protection Function

Multiple protection function, such as safe ground protection, voltage protection, temperature protection, current protection, pressure protection, compressor overload protection, motor overheat protection, electromagnetic interference protection, etc., ensuring the system consistently safe and reliable operation.



### Extreme Testing

Tests under extreme conditions such as Highly Accelerated Life Testing (HALT), Surge testing and Electro-Static Discharge (ESD), the test conditions for which are far more extreme than EU test standards are performed on the units to further guarantee the reliability of electronic components.



### Resistant to 8 Intensity Earthquake and Violent Typhoon\*

The V8 Series VRF has a reinforced frame footprint to prevent tipping and deformation damage and can still operate normally in a 8 intensity earthquake or Violent Typhoon (Category 17).



\*This function is available as a customization option.

### Auto Snow-blowing Function

The innovatively designed auto snow-blowing function enables the outdoor unit to prevent the accumulation of snow by itself.



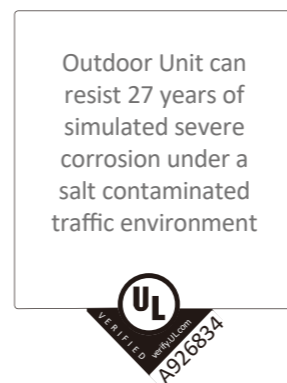
### Dust-clean function

The innovatively designed dust-clean function enables the outdoor unit to prevent the dust by itself.



### UL Anti-Corrosion Certificate\*

It has been certified by UL that our VRF outdoor unit can withstand 27 years of simulated severe corrosion under a salt contaminated traffic environment.



\*UL anti-corrosion certificate is available for heavy anti-corrosion treatment units.

### Anti-corrosion Protection

Outdoor units are given anti-corrosion treatment for non-extreme conditions as standard and can also be customized with heavy anti-corrosion treatment on main components for surface protection against corrosive air, acid rain and saline air (for installations in coastal regions) to extend overall useful life. The integrity of the anti-corrosion treatment is ensured by subjecting major components and parts to salt mist testing, moisture and heating testing and light aging testing.



01 Screws / bolts / gaskets



02 Fan motor



03 Heat exchanger aluminum foil



04 Electric control box case



05 Painted sheet metal



\*Heavy anti-corrosion treatment is available as a customization option.

## WIDE CAPACITY RANGE

### Wide Capacity Range

The V8 Series VRF are available in individual series and combinable series. The individual series has capacities from 8HP to 36HP and the combinable series from 8HP to 108HP, perfectly suited for small to large buildings.

#### V8 - Combinable Series

**Single unit**

8-18HP      20-26HP      28-36HP

**Combined unit**

38-72HP      74-108HP

Note: Four units combination are possible for the 8-24 HP models, for four units combination please contact Midea.

#### V8i - Individual Series

**Single unit**

8-18HP      20-26HP      28-36HP

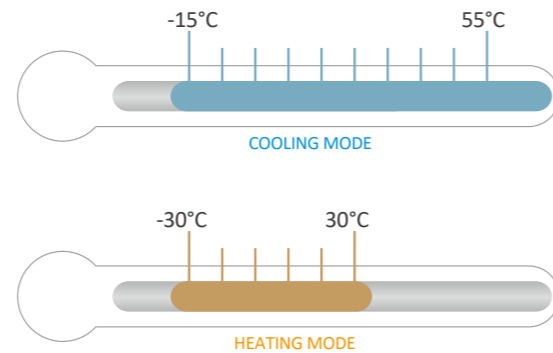
### Wide Range of Indoor Units

Midea provides 12 types and more 100 models of VRF indoor units to meet varied customer requirements in a wide range of locations including offices, shopping malls, hospitals and airports.



### Wide Operation Range

Thanks to the EVI compressor and refrigerant cooling technology, the V8 Series VRF can operate at temperatures as low as -30°C for heating and up to 55°C for cooling.



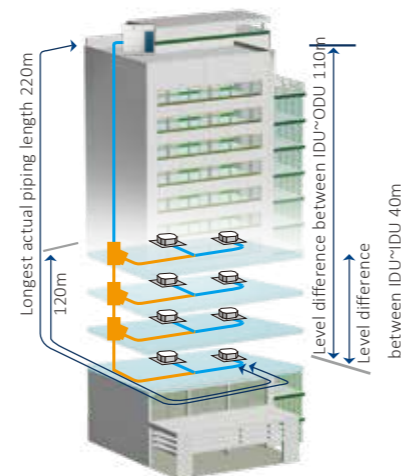
It also supports continuous operation in temperatures up to 60°C to cope with short periods of extreme heat.



### Long Piping Capability

Piping length	Capability (m)
Total piping length	1100
Longest piping length-actual (equivalent)	220(260)
Longest piping length after first branch	40/120*
Largest level difference between IDUs and ODU-ODU up (down)	110(110)
Largest level difference between IDUs	40m

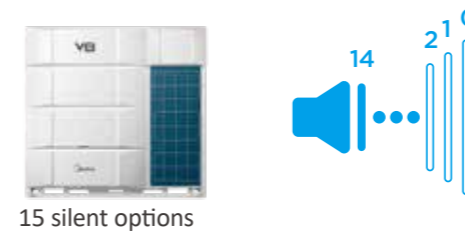
\*The longest length after first branch is 40m as standard but can be extended to up to 120m under certain conditions. Please contact your local dealer for further information.



## ENHANCED COMFORT

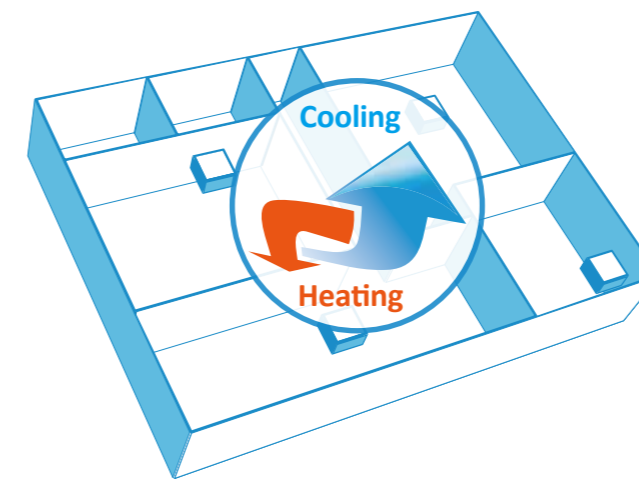
### Advanced Silent Technology

15-step silent mode provide more freedom and convenience to match the customer needs.



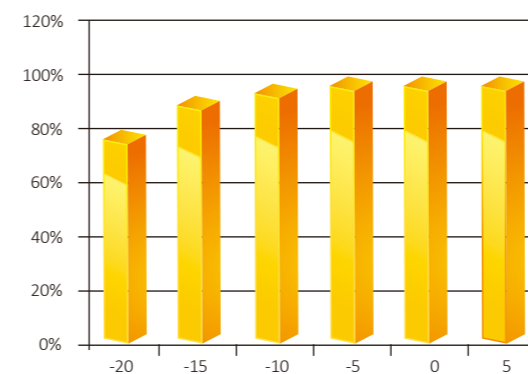
### Auto Cooling-heating Changeover

Automatically selects cooling or heating mode to achieve the set temperature.



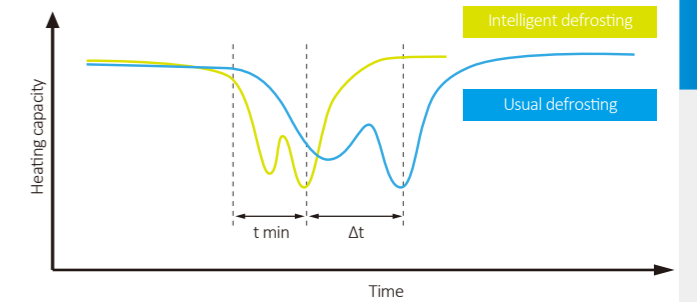
### Enhanced Heating Capacity

Thanks to the EVI compressor, the heating capacity can be improved greatly. Heating capacity is 100% of rated capacity at ambient temperatures as low as -5 ° C and 90% of rated capacity at -15°C.



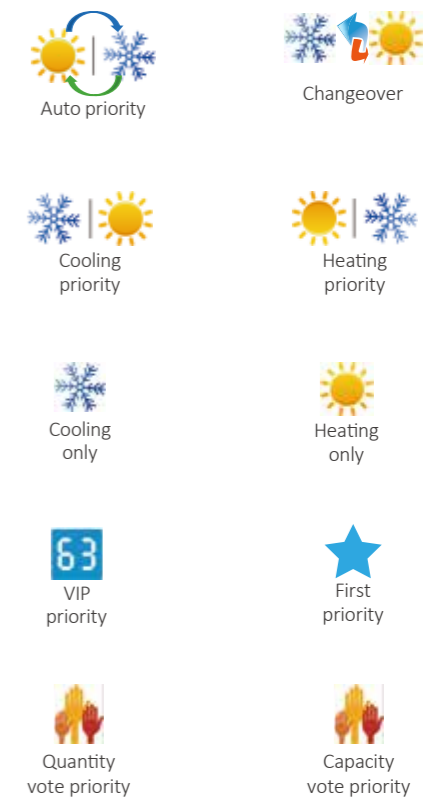
### Intelligent Defrosting Technology

The intelligent defrosting program calculates the time required for defrosting according to the actual system status, eliminating heat losses from unnecessary defrosting. A specialized defrosting valve reduces time required for defrosting to as little as four minutes.



### 10 Priority Modes

10 priority mode options provide more freedom and convenience to match the customer needs.



# EASY INSTALLATION AND SERVICE

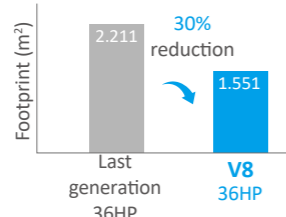
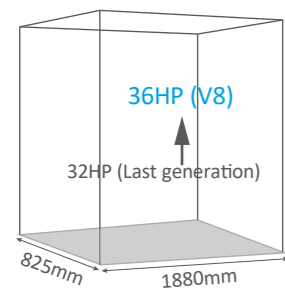
## Auto Addressing

Addresses for all indoor units and combined outdoor units can be assigned automatically by the V8 system, further simplifying installation.



## Space Saving

The V8 Series VRF has large capacity and small size, with a capacity of up to 36 HP in a single unit. A single unit can provide cooling/heating for a space of 400m<sup>2</sup>. The space-saving advantages are particularly obvious for large projects.



## High External Static Pressure\*

The static pressure of the outdoor unit can be up to 80Pa which facilitates installation of the unit on each floor of high-rise building or on balconies.



\*External static pressure above 20Pa is available as a customization option.

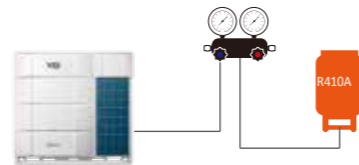
## Automatic Refrigerant Charging\*

Compared to manual refrigerant charging, automatic refrigerant charging greatly simplifies the process, making installation and maintenance easier and more efficient.

- ### Manual refrigerant charging

  - Calculate additional refrigerant quantity
  - Connect refrigerant tank to the outdoor unit & start filling process
  - Observe the weight scale to check the refrigerant charge
  - Close the shut-off valve manually & finish filling process
- ### Automatic refrigerant charging

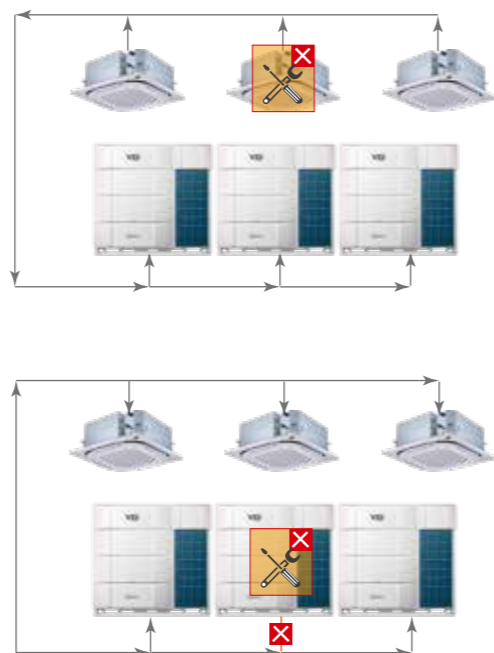
  - Connect refrigerant tank to the outdoor unit & activate automatic charging function
  - Close the shut-off valve automatically & finish filling process



\*This function is available as a customization option.

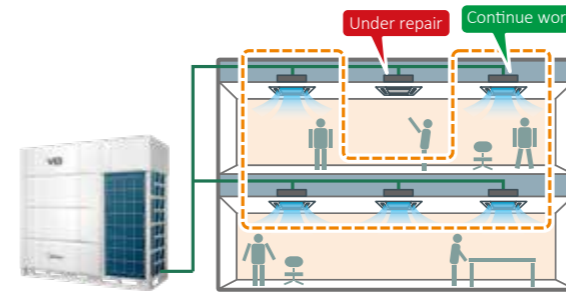
## Automatic Refrigerant Recycling

When an indoor unit fails, the refrigerant can be recycled into the outdoor units. When part of the outdoor unit fails, the refrigerant can be recycled into the indoor units and the normal outdoor unit. Two types of refrigerant recycling make the maintenance easier and more efficient.



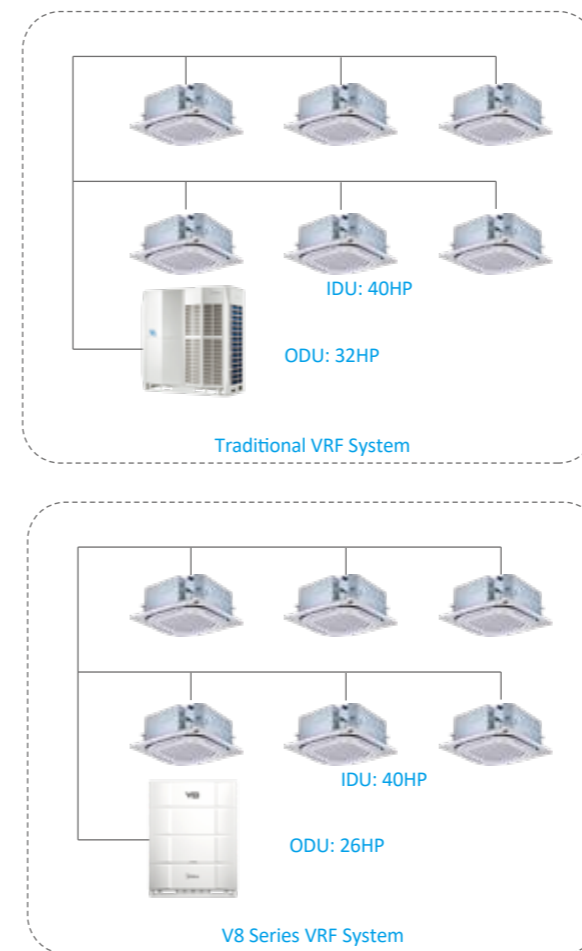
## Maintenance Mode

The unit has maintenance mode which allows the shutdown of some indoor units without shutting down the whole VRF system. The maintenance mode can be activated on site during maintenance period as the remaining indoor units continue to operate.



## Wide Combination Ratio\*

Compared to traditional VRF with combination ratio of 50-130%, the V8 Series VRF can be extended to 50-150%, and the wider combination ratio allows for more flexible system configuration. The larger combination ratio can be applied to long-term part-load operation scenarios, allowing for further reduction in installation costs.



\*Combination ratio over 130% is available as a customization option.

## Easy Software Program Upgrade

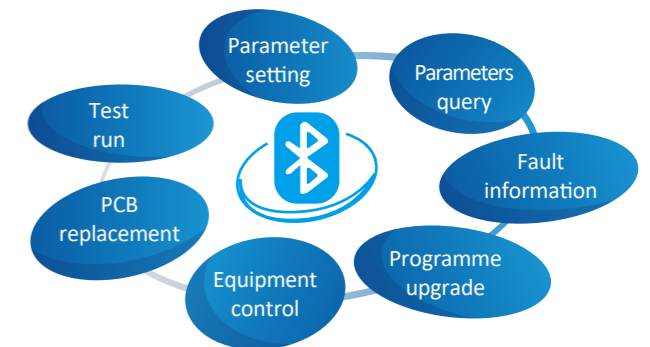
In addition to upgrading the program of outdoor and indoor units through USB and burner, the new product can also remotely upgrade all the programs of indoor and outdoor units through data cloud gateway, making system upgrades very convenient and ensuring that the system program is always up to date.



\*The data cloud gateway is still under development and needs to be purchased separately.

## Smart Commissioning/Maintenance Tool\*

With the newly developed smart tool (Bluetooth module and special Bluetooth after-sales kit), system settings, operating parameter queries, trial runs and programme upgrades are all possible without opening the cabinet.



### Main functions:

- Fault information storage
- Operating parameters query
- Start commissioning test run
- System parameter setting
- Quick after-sales PCB replacement
- Equipment control
- Indoor and outdoor units programme upgrade

\*The Bluetooth module is available as a customization option.

# Specifications

## V8 (Combinable series)

HP			8	10	12
Model			MV8-252WV2GN1(ECO)	MV8-280WV2GN1(ECO)	MV8-335WV2GN1(ECO)
Power supply	V/N/Hz		380-415/3/50(60)	380-415/3/50(60)	380-415/3/50(60)
Cooling <sup>1</sup>	Capacity	kW	25.2	28	33.5
		kBtu/h	86.0	95.5	114.3
	Power input	kW	5.3	6.8	8.3
	EER		4.76	4.14	4.06
Heating <sup>2</sup>	Capacity	kW	27	31.5	37.5
		kBtu/h	92.1	107.5	128.0
	Power input	kW	5.4	6.6	8.5
	COP		5.03	4.76	4.43
Connected indoor unit	Total capacity		50-130%	50-130%	50-130%
	Max. quantity		13	16	19
Compressors	Type		DC inverter	DC inverter	DC inverter
	Quantity		1	1	1
Fan motors	Type		DC	DC	DC
	Quantity		1	1	1
	Airflow rate	m <sup>3</sup> /h	12600	12600	13500
	Max. ESP	Pa	0-20 (standard) 20-80 (customized)	0-20 (standard) 20-80 (customized)	0-20 (standard) 20-80 (customized)
Refrigerant	Type		R410A	R410A	R410A
	Factory charge	kg	7	7	7
Pipe connections <sup>3</sup>	Liquid pipe	mm	∅12.7	∅12.7	∅12.7
	Gas pipe	mm	∅25.4	∅25.4	∅25.4
Sound pressure level <sup>4</sup>		dB(A)	56	57	59
Net dimensions (W×H×D)		mm	940×1760×825	940×1760×825	940×1760×825
Packed dimensions (W×H×D)		mm	1010×1945×890	1010×1945×890	1010×1945×890
Net weight		kg	195	195	195
Gross weight		kg	213	213	213
Ambient temp. operation range	Cooling	°C(DB)	-15 to 55	-15 to 55	-15 to 55
	Heating	°C(DB)	-30 to 30	-30 to 30	-30 to 30

HP			14	16	18	20
Model			MV8-400WV2GN1(ECO)	MV8-450WV2GN1(ECO)	MV8-500WV2GN1(ECO)	MV8-560WV2GN1(ECO)
Power supply	V/N/Hz		380-415/3/50(60)	380-415/3/50(60)	380-415/3/50(60)	380-415/3/50(60)
Cooling <sup>1</sup>	Capacity	kW	40	45	50	56
		kBtu/h	136.5	153.5	170.6	191.1
	Power input	kW	9.9	11.7	12.8	15.1
	EER		4.05	3.83	3.91	3.71
Heating <sup>2</sup>	Capacity	kW	45	50	56	63
		kBtu/h	153.5	170.6	191.1	215.0
	Power input	kW	10.2	11.7	13.5	15.3
	COP		4.40	4.27	4.15	4.13
Connected indoor unit	Total capacity		50-130%	50-130%	50-130%	50-130%
	Max. quantity		23	26	29	33
Compressors	Type		DC inverter	DC inverter	DC inverter	DC inverter
	Quantity		1	1	1	2
Fan motors	Type		DC	DC	DC	DC
	Quantity		1	1	1	2
	Airflow rate	m <sup>3</sup> /h	15600	15600	16500	22000
	Max. ESP	Pa	0-20 (standard) 20-80 (customized)	0-20 (standard) 20-80 (customized)	0-20 (standard) 20-80 (customized)	0-20 (standard) 20-80 (customized)
Refrigerant	Type		R410A	R410A	R410A	R410A
	Factory charge	kg	8	8	8.4	9.3
Pipe connections <sup>3</sup>	Liquid pipe	mm	∅15.9	∅15.9	∅15.9	∅15.9
	Gas pipe	mm	∅28.6	∅28.6	∅28.6	∅28.6
Sound pressure level <sup>4</sup>		dB(A)	59	60	61	62
Net dimensions (W×H×D)		mm	940×1760×825	940×1760×825	940×1760×825	1340×1760×825
Packed dimensions (W×H×D)		mm	1010×1945×890	1010×1945×890	1010×1945×890	1410×1945×890
Net weight		kg	213	213	215	295
Gross weight		kg	230	230	232	315
Ambient temp. operation range	Cooling	°C(DB)	-15 to 55	-15 to 55	-15 to 55	-15 to 55
	Heating	°C(DB)	-30 to 30	-30 to 30	-30 to 30	-30 to 30

- Notes:
- Indoor temperature 27°C DB, 19°C WB; outdoor temperature 35°C DB; equivalent refrigerant piping length 7.5m with zero level difference.
  - Indoor temperature 20°C DB; outdoor temperature 7°C DB, 6°C WB; equivalent refrigerant piping length 7.5m with zero level difference.
  - Diameters given are those of the unit's stop valves.
  - Sound pressure level is measured at a position 1m in front of the unit and 1.3m above the floor in a semi-anechoic chamber.

HP			22	24	26	28
Model			MV8-615WV2GN1(ECO)	MV8-670WV2GN1(ECO)	MV8-730WV2GN1(ECO)	MV8-785WV2GN1(ECO)
Power supply	V/N/Hz		380-415/3/50(60)	380-415/3/50(60)	380-415/3/50(60)	380-415/3/50(60)
Cooling <sup>1</sup>	Capacity	kW	61.5	67	73	78.5
		kBtu/h	209.8	228.6	249.1	267.9
	Power input	kW	17.9	19.0	21.0	24.0
	EER		3.43	3.52	3.47	3.27
Heating <sup>2</sup>	Capacity	kW	69	75	81.5	87.5
		kBtu/h	235.4	255.9	278.1	298.6
	Power input	kW	17.6	19.0	21.0	24.2
	COP		3.91	3.95	3.88	3.62
Connected indoor unit	Total capacity		50-130%	50-130%	50-130%	50-130%
	Max. quantity		36	39	43	46
Compressors	Type		DC inverter	DC inverter	DC inverter	DC inverter
	Quantity		2	2	2	2
Fan motors	Type		DC	DC	DC	DC
	Quantity		2	2	2	2
	Airflow rate	m <sup>3</sup> /h	22000	21500	21500	29000
	Max. ESP	Pa	0-20 (standard) 20-80 (customized)	0-20 (standard) 20-80 (customized)	0-20 (standard) 20-80 (customized)	0-20 (standard) 20-80 (customized)
Refrigerant	Type		R410A	R410A	R410A	R410A
	Factory charge	kg	9.3	12	12	19
Pipe connections <sup>3</sup>	Liquid pipe	mm	∅15.9	∅15.9	∅15.9	∅22.2
	Gas pipe	mm	∅28.6	∅28.6	∅28.6	∅31.8
Sound pressure level <sup>4</sup>		dB(A)	62	62	62	63
Net dimensions (W×H×D)		mm	1340×1760×825	1340×1760×825	1340×1760×825	1880×1760×825
Packed dimensions (W×H×D)		mm	1410×1945×890	1410×1945×890	1410×1945×890	1935×1945×890
Net weight		kg	295	315	315	373
Gross weight		kg	315	335	335	403
Ambient temp. operation range	Cooling	°C(DB)	-15 to 55	-15 to 55	-15 to 55	-15 to 55
	Heating	°C(DB)	-30 to 30	-30 to 30	-30 to 30	-30 to 30

HP			30	32	34	36
Model			MV8-850WV2GN1(ECO)	MV8-900WV2GN1(ECO)	MV8-950WV2GN1(ECO)	MV8-1010WV2GN1(ECO)
Power supply	V/N/Hz		380-415/3/50(60)	380-415/3/50(60)	380-415/3/50(60)	380-415/3/50(60)
Cooling <sup>1</sup>	Capacity	kW	85	90	95.2	101
		kBtu/h	290.0	307.1	324.2	344.6
	Power input	kW	27.2	30.2	32.5	35.4
	EER		3.12	2.98	2.93	2.85
Heating <sup>2</sup>	Capacity	kW	95	100	106	112
		kBtu/h	324.2	341.2	361.7	382.2
	Power input	kW	27.6	30.2	32.2	34.7
	COP		3.44	3.31	3.29	3.23
Connected indoor unit	Total capacity		50-130%	50-130%	50-130%	50-130%
	Max. quantity		50	53	56	59
Compressors	Type		DC inverter	DC inverter	DC inverter	DC inverter
	Quantity		2	2	2	2
Fan motors	Type		DC	DC	DC	DC
	Quantity		2	2	2	2
	Airflow rate	m <sup>3</sup> /h	28000	28000	29000	29000
	Max. ESP	Pa	0-20 (standard) 20-80 (customized)	0-20 (standard) 20-80 (customized)	0-20 (standard) 20-80 (customized)	0-20 (standard) 20-80 (customized)
Refrigerant	Type		R410A	R410A	R410A	R410A
	Factory charge	kg	21	21	21	21
Pipe connections <sup>3</sup>	Liquid pipe	mm	∅22.2	∅22.2	∅22.2	∅22.2
	Gas pipe	mm	∅34.9	∅34.9	∅34.9	∅34.9
Sound pressure level <sup>4</sup>		dB(A)	64	64	66	66
Net dimensions (W×H×D)		mm	1880×1760×825	1880×1760×825	1880×1760×825	1880×1760×825
Packed dimensions (W×H×D)		mm	1935×1945×890	1935×1945×890	1935×1945×890	1935×1945×890
Net weight		kg	405	405	406	406
Gross weight		kg	435	435	436	436
Ambient temp. operation range	Cooling	°C(DB)	-15 to 55	-15 to 55	-15 to 55	-15 to 55
	Heating	°C(DB)	-30 to 30	-30 to 30	-30 to 30	-30 to 30

- Notes:
- Indoor temperature 27°C DB, 19°C WB; outdoor temperature 35°C DB; equivalent refrigerant piping length 7.5m with zero level difference.
  - Indoor temperature 20°C DB; outdoor temperature 7°C DB, 6°C WB; equivalent refrigerant piping length 7.5m with zero level difference.
  - Diameters given are those of the unit's stop valves.
  - Sound pressure level is measured at a position 1m in front of the unit and 1.3m above the floor in a semi-anechoic chamber.

# Specifications

## V8 (Combinable series)

HP			38	40	42	44	
Model name (Combination unit)			MV8-1065WV2GN1(ECO)	MV8-1120WV2GN1(ECO)	MV8-1180WV2GN1(ECO)	MV8-1235WV2GN1(ECO)	
Combination type			16HP+22HP	16HP+24HP	16HP+26HP	16HP+28HP	
Power supply			V/N/Hz 380-415/3/50(60)	V/N/Hz 380-415/3/50(60)	V/N/Hz 380-415/3/50(60)	V/N/Hz 380-415/3/50(60)	
Cooling <sup>1</sup>	Capacity	kW	106.5	112.0	118.0	123.5	
		kBtu/h	363.3	382.1	402.6	421.4	
	Power input	kW	29.6	30.7	32.7	35.7	
		EER	3.60	3.65	3.61	3.46	
Heating <sup>2</sup>	Capacity	kW	119.0	125.0	131.5	137.5	
		kBtu/h	406.0	426.5	448.7	469.2	
	Power input	kW	29.3	30.7	32.7	35.9	
		COP	4.06	4.07	4.02	3.83	
Connected indoor unit	Total capacity		50-130%	50-130%	50-130%	50-130%	
	Max. quantity		62	64	64	64	
Compressors	Type		DC inverter	DC inverter	DC inverter	DC inverter	
	Quantity		3	3	3	3	
Fan motors	Type		DC	DC	DC	DC	
		Quantity		3	3	3	
	Airflow rate	m <sup>3</sup> /h		37600	37100	37100	44600
		Max. ESP	Pa	0-20 (standard) 20-80 (customized)	0-20 (standard) 20-80 (customized)	0-20 (standard) 20-80 (customized)	0-20 (standard) 20-80 (customized)
Refrigerant	Type		R410A	R410A	R410A	R410A	
	Factory charge	kg	8+9.3	8+12	8+12	8+19	
Pipe connections <sup>3</sup>	Liquid pipe	mm	Ø19.1	Ø19.1	Ø19.1	Ø19.1	
	Gas pipe	mm	Ø38.1	Ø38.1	Ø38.1	Ø38.1	
Sound pressure level <sup>4</sup>		dB(A)	64	64	64	65	
Net dimensions (W×H×D)			mm	(940×1760×825)+ (1340×1760×825)	(940×1760×825)+ (1340×1760×825)	(940×1760×825)+ (1340×1760×825)	
Packed dimensions (W×H×D)			mm	(1010×1945×890)+ (1410×1945×890)	(1010×1945×890)+ (1410×1945×890)	(1010×1945×890)+ (1410×1945×890)	
Net weight			kg	213+295	213+315	213+315	
Gross weight			kg	230+315	230+335	230+335	
Ambient temp. operation range	Cooling	°C(DB)	-15 to 55	-15 to 55	-15 to 55	-15 to 55	
	Heating	°C(DB)	-30 to 30	-30 to 30	-30 to 30	-30 to 30	

HP			46	48	50	52	
Model name (Combination unit)			MV8-1285WV2GN1(ECO)	MV8-1345WV2GN1(ECO)	MV8-1400WV2GN1(ECO)	MV8-1460WV2GN1(ECO)	
Combination type			22HP+24HP	22HP+26HP	24HP+26HP	26HP+26HP	
Power supply			V/N/Hz 380-415/3/50(60)	V/N/Hz 380-415/3/50(60)	V/N/Hz 380-415/3/50(60)	V/N/Hz 380-415/3/50(60)	
Cooling <sup>1</sup>	Capacity	kW	128.5	134.5	140.0	146.0	
		kBtu/h	438.4	458.9	477.7	498.2	
	Power input	kW	36.9	38.9	40.0	42.0	
		EER	3.48	3.46	3.50	3.48	
Heating <sup>2</sup>	Capacity	kW	144.0	150.5	156.5	163.0	
		kBtu/h	491.3	513.5	534.0	556.2	
	Power input	kW	36.6	38.6	40.0	42.0	
		COP	3.93	3.90	3.91	3.88	
Connected indoor unit	Total capacity		50-130%	50-130%	50-130%	50-130%	
	Max. quantity		64	64	64	64	
Compressors	Type		DC inverter	DC inverter	DC inverter	DC inverter	
	Quantity		4	4	4	4	
Fan motors	Type		DC	DC	DC	DC	
		Quantity		4	4	4	
	Airflow rate	m <sup>3</sup> /h		43500	43500	43000	43000
		Max. ESP	Pa	0-20 (standard) 20-80 (customized)	0-20 (standard) 20-80 (customized)	0-20 (standard) 20-80 (customized)	0-20 (standard) 20-80 (customized)
Refrigerant	Type		R410A	R410A	R410A	R410A	
	Factory charge	kg	9.3+12	9.3+12	12×2	12×2	
Pipe connections <sup>3</sup>	Liquid pipe	mm	Ø19.1	Ø19.1	Ø19.1	Ø19.1	
	Gas pipe	mm	Ø38.1	Ø38.1	Ø38.1	Ø38.1	
Sound pressure level <sup>4</sup>		dB(A)	65	65	65	65	
Net dimensions (W×H×D)			mm	(1340×1760×825)×2	(1340×1760×825)×2	(1340×1760×825)×2	
Packed dimensions (W×H×D)			mm	(1410×1945×890)×2	(1410×1945×890)×2	(1410×1945×890)×2	
Net weight			kg	295+315	295+315	315×2	
Gross weight			kg	315+335	315+335	335×2	
Ambient temp. operation range	Cooling	°C(DB)	-15 to 55	-15 to 55	-15 to 55	-15 to 55	
	Heating	°C(DB)	-30 to 30	-30 to 30	-30 to 30	-30 to 30	

- Notes:
- Indoor temperature 27°C DB, 19°C WB; outdoor temperature 35°C DB; equivalent refrigerant piping length 7.5m with zero level difference.
  - Indoor temperature 20°C DB; outdoor temperature 7°C DB, 6°C WB; equivalent refrigerant piping length 7.5m with zero level difference.
  - Diameters given are those for the pipe connecting the outdoor unit combination to the first indoor branch joint for systems with total equivalent liquid piping lengths of less than 90m. For systems with total equivalent liquid piping lengths of 90m or longer, please refer to the V8 Series Engineering Data Book for connection piping diameters.
  - Sound pressure level is measured at a position 1m in front of the unit and 1.3m above the floor in a semi-anechoic chamber.

HP			54	56	58	60	
Model name (Combination unit)			MV8-1510WV2GN1(ECO)	MV8-1570WV2GN1(ECO)	MV8-1625WV2GN1(ECO)	MV8-1680WV2GN1(ECO)	
Combination type			18HP+36HP	20HP+36HP	22HP+36HP	24HP+36HP	
Power supply			V/N/Hz 380-415/3/50(60)	V/N/Hz 380-415/3/50(60)	V/N/Hz 380-415/3/50(60)	V/N/Hz 380-415/3/50(60)	
Cooling <sup>1</sup>	Capacity	kW	151.0	157.0	162.5	168.0	
		kBtu/h	515.2	535.7	554.4	573.2	
	Power input	kW	48.2	50.5	53.3	54.4	
		EER	3.13	3.11	3.05	3.09	
Heating <sup>2</sup>	Capacity	kW	168.0	175.0	181.0	187.0	
		kBtu/h	573.3	597.2	617.6	638.1	
	Power input	kW	48.2	50.0	52.3	53.7	
		COP	3.49	3.50	3.46	3.48	
Connected indoor unit	Total capacity		50-130%	50-130%	50-130%	50-130%	
	Max. quantity		64	64	64	64	
Compressors	Type		DC inverter	DC inverter	DC inverter	DC inverter	
	Quantity		3	4	4	4	
Fan motors	Type		DC	DC	DC	DC	
		Quantity		3	4	4	
	Airflow rate	m <sup>3</sup> /h		45500	51000	51000	50500
		Max. ESP	Pa	0-20 (standard) 20-80 (customized)	0-20 (standard) 20-80 (customized)	0-20 (standard) 20-80 (customized)	0-20 (standard) 20-80 (customized)
Refrigerant	Type		R410A	R410A	R410A	R410A	
	Factory charge	kg	8.4+21	9.3+21	9.3+21	12+21	
Pipe connections <sup>3</sup>	Liquid pipe	mm	Ø19.1	Ø19.1	Ø19.1	Ø19.1	
	Gas pipe	mm	Ø38.1	Ø41.3	Ø41.3	Ø41.3	
Sound pressure level <sup>4</sup>		dB(A)	67	67	67	67	
Net dimensions (W×H×D)			mm	(940×1760×825)+ (1880×1760×825)	(1340×1760×825)+ (1880×1760×825)	(1340×1760×825)+ (1880×1760×825)	
Packed dimensions (W×H×D)			mm	(1010×1945×890)+ (1935×1945×890)	(1410×1945×890)+ (1935×1945×890)	(1410×1945×890)+ (1935×1945×890)	
Net weight			kg	215+406	295+406	295+406	
Gross weight			kg	232+436	315+436	315+436	
Ambient temp. operation range	Cooling	°C(DB)	-15 to 55	-15 to 55	-15 to 55	-15 to 55	
	Heating	°C(DB)	-30 to 30	-30 to 30	-30 to 30	-30 to 30	

HP			62	64	66	68	
Model name (Combination unit)			MV8-1740WV2GN1(ECO)	MV8-1795WV2GN1(ECO)	MV8-1860WV2GN1(ECO)	MV8-1910WV2GN1(ECO)	
Combination type			26HP+36HP	28HP+36HP	30HP+36HP	32HP+36HP	
Power supply			V/N/Hz 380-415/3/50(60)	V/N/Hz 380-415/3/50(60)	V/N/Hz 380-415/3/50(60)	V/N/Hz 380-415/3/50(60)	
Cooling <sup>1</sup>	Capacity	kW	174.0	179.5	186.0	191.0	
		kBtu/h	593.7	612.5	634.6	651.7	
	Power input	kW	56.4	59.4	62.6	65.6	
		EER	3.09	3.02	2.97	2.91	
Heating <sup>2</sup>	Capacity	kW	193.5	199.5	207.0	212.0	
		kBtu/h	660.3	680.8	706.4	723.4	
	Power input	kW	55.7	58.9	62.3	64.9	
		COP	3.47	3.39	3.32	3.27	
Connected indoor unit	Total capacity		50-130%	50-130%	50-130%	50-130%	
	Max. quantity		64	64	64	64	
Compressors	Type		DC inverter	DC inverter	DC inverter	DC inverter	
	Quantity		4	4	4	4	
Fan motors	Type		DC	DC	DC	DC	
		Quantity		4	4	4	
	Airflow rate	m <sup>3</sup> /h		50500	58000	57000	57000
		Max. ESP	Pa	0-20 (standard) 20-80 (customized)	0-20 (standard) 20-80 (customized)	0-20 (standard) 20-80 (customized)	0-20 (standard) 20-80 (customized)
Refrigerant	Type		R410A	R410A	R410A	R410A	
	Factory charge	kg	12+21	19+21	21×2	21×2	
Pipe connections <sup>3</sup>	Liquid pipe	mm	Ø19.1	Ø19.1	Ø19.1	Ø22.2	
	Gas pipe	mm	Ø41.3	Ø41.3	Ø41.3	Ø44.5	
Sound pressure level <sup>4</sup>		dB(A)	67	68	68	68	
Net dimensions (W×H×D)			mm	(1340×1760×825)+ (1880×1760×825)	(1880×1760×825)×2	(1880×1760×825)×2	
Packed dimensions (W×H×D)			mm	(1410×1945×890)+ (1935×1945×890)	(1935×1945×890)×2	(1935×1945×890)×2	
Net weight			kg	315+406	405+406	405+406	
Gross weight			kg	335+436	435+436	435+436	
Ambient temp. operation range	Cooling	°C(DB)	-15 to 55	-15 to 55	-15 to 55	-15 to 55	
	Heating	°C(DB)	-30 to 30	-30 to 30	-30 to 30	-30 to 30	

- Notes:
- Indoor temperature 27°C DB, 19°C WB; outdoor temperature 35°C DB; equivalent refrigerant piping length 7.5m with zero level difference.
  - Indoor temperature 20°C DB; outdoor temperature 7°C DB, 6°C WB; equivalent refrigerant piping length 7.5m with zero level difference.
  - Diameters given are those for the pipe connecting the outdoor unit combination to the first indoor branch joint for systems with total equivalent liquid piping lengths of less than 90m. For systems with total equivalent liquid piping lengths of 90m or longer, please refer to the V8 Series Engineering Data Book for connection piping diameters.
  - Sound pressure level is measured at a position 1m in front of the unit and 1.3m above the floor in a semi-anechoic chamber.

# Specifications

## V8 (Combinable series)

HP			70	72	74	76
Model name (Combination unit)			MV8-1960WV2GN1(ECO)	MV8-2020WV2GN1(ECO)	MV8-2080WV2GN1(ECO)	MV8-2140WV2GN1(ECO)
Combination type			34HP+36HP	36HP+36HP	14HP+24HP+36HP	14HP+26HP+36HP
Power supply	V/N/Hz		380-415/3/50(60)	380-415/3/50(60)	380-415/3/50(60)	380-415/3/50(60)
Cooling <sup>1</sup>	Capacity	kW	196.2	202.0	208.0	214.0
		kBtu/h	668.8	689.2	709.7	730.2
	Power input	kW	67.9	70.8	64.3	66.3
	EER		2.89	2.85	3.23	3.23
Heating <sup>2</sup>	Capacity	kW	218.0	224.0	232.0	238.5
		kBtu/h	743.9	764.4	791.6	813.8
	Power input	kW	66.9	69.4	63.9	65.9
	COP		3.26	3.23	3.63	3.62
Connected indoor unit	Total capacity		50-130%	50-130%	50-130%	50-130%
	Max. quantity		64	64	64	64
Compressors	Type		DC inverter	DC inverter	DC inverter	DC inverter
	Quantity		4	4	5	5
Fan motors	Type		DC	DC	DC	DC
	Quantity		4	4	5	5
	Airflow rate	m <sup>3</sup> /h	58000	58000	66100	66100
	Max. ESP	Pa	0-20 (standard) 20-80 (customized)	0-20 (standard) 20-80 (customized)	0-20 (standard) 20-80 (customized)	0-20 (standard) 20-80 (customized)
Refrigerant	Type		R410A	R410A	R410A	R410A
	Factory charge	kg	21x2	21x2	8+12+21	8+12+21
Pipe connections <sup>3</sup>	Liquid pipe	mm	Ø22.2	Ø22.2	Ø22.2	Ø22.2
	Gas pipe	mm	Ø44.5	Ø44.5	Ø44.5	Ø44.5
Sound pressure level <sup>4</sup>		dB(A)	69	69	68	68
Net dimensions (WxHxD)		mm	(1880x1760x825)×2	(1880x1760x825)×2	(940x1760x825)+ (1340x1760x825)+ (1880x1760x825)	(940x1760x825)+ (1340x1760x825)+ (1880x1760x825)
Packed dimensions (WxHxD)		mm	(1935x1945x890)×2	(1935x1945x890)×2	(1010x1945x890)+ (1410x1945x890)+ (1935x1945x890)	(1010x1945x890)+ (1410x1945x890)+ (1935x1945x890)
Net weight		kg	406x2	406x2	213+315+406	213+315+406
Gross weight		kg	436x2	436x2	230+335+436	230+335+436
Ambient temp. operation range	Cooling	°C(DB)	-15 to 55	-15 to 55	-15 to 55	-15 to 55
	Heating	°C(DB)	-30 to 30	-30 to 30	-30 to 30	-30 to 30

HP			78	80	82	84
Model name (Combination unit)			MV8-2190WV2GN1(ECO)	MV8-2245WV2GN1(ECO)	MV8-2300WV2GN1(ECO)	MV8-2355WV2GN1(ECO)
Combination type			16HP+26HP+36HP	16HP+28HP+36HP	20HP+26HP+36HP	22HP+26HP+36HP
Power supply	V/N/Hz		380-415/3/50(60)	380-415/3/50(60)	380-415/3/50(60)	380-415/3/50(60)
Cooling <sup>1</sup>	Capacity	kW	219.0	224.5	230.0	235.5
		kBtu/h	747.2	766.0	784.8	803.5
	Power input	kW	68.1	71.1	71.5	74.3
	EER		3.22	3.16	3.22	3.17
Heating <sup>2</sup>	Capacity	kW	243.5	249.5	256.5	262.5
		kBtu/h	830.9	851.4	875.3	895.7
	Power input	kW	67.4	70.6	71.0	73.3
	COP		3.61	3.53	3.61	3.58
Connected indoor unit	Total capacity		50-130%	50-130%	50-130%	50-130%
	Max. quantity		64	64	64	64
Compressors	Type		DC inverter	DC inverter	DC inverter	DC inverter
	Quantity		5	5	6	6
Fan motors	Type		DC	DC	DC	DC
	Quantity		5	5	6	6
	Airflow rate	m <sup>3</sup> /h	66100	73600	72500	72500
	Max. ESP	Pa	0-20 (standard) 20-80 (customized)	0-20 (standard) 20-80 (customized)	0-20 (standard) 20-80 (customized)	0-20 (standard) 20-80 (customized)
Refrigerant	Type		R410A	R410A	R410A	R410A
	Factory charge	kg	8+12+21	8+19+21	9.3+12+21	9.3+12+21
Pipe connections <sup>3</sup>	Liquid pipe	mm	Ø22.2	Ø22.2	Ø22.2	Ø22.2
	Gas pipe	mm	Ø44.5	Ø44.5	Ø44.5	Ø50.8
Sound pressure level <sup>4</sup>		dB(A)	68	68	69	69
Net dimensions (WxHxD)		mm	(940x1760x825)+ (1340x1760x825)+ (1880x1760x825)	(940x1760x825)+ (1880x1760x825)×2	(1340x1760x825)×2+ (1880x1760x825)	(1340x1760x825)×2+ (1880x1760x825)
Packed dimensions (WxHxD)		mm	(1010x1945x890)+ (1410x1945x890)+ (1935x1945x890)	(1010x1945x890)+ (1935x1945x890)×2	(1410x1945x890)×2+ (1935x1945x890)	(1410x1945x890)×2+ (1935x1945x890)
Net weight		kg	213+315+406	213+373+406	295+315+406	295+315+406
Gross weight		kg	230+335+436	230+403+436	315+335+436	315+335+436
Ambient temp. operation range	Cooling	°C(DB)	-15 to 55	-15 to 55	-15 to 55	-15 to 55
	Heating	°C(DB)	-30 to 30	-30 to 30	-30 to 30	-30 to 30

- Notes:
- Indoor temperature 27°C DB, 19°C WB; outdoor temperature 35°C DB; equivalent refrigerant piping length 7.5m with zero level difference.
  - Indoor temperature 20°C DB; outdoor temperature 7°C DB, 6°C WB; equivalent refrigerant piping length 7.5m with zero level difference.
  - Diameters given are those for the pipe connecting the outdoor unit combination to the first indoor branch joint for systems with total equivalent liquid piping lengths of less than 90m. For systems with total equivalent liquid piping lengths of 90m or longer, please refer to the V8 Series Engineering Data Book for connection piping diameters.
  - Sound pressure level is measured at a position 1m in front of the unit and 1.3m above the floor in a semi-anechoic chamber.

HP			86	88
Model name (Combination unit)			MV8-2410WV2GN1(ECO)	MV8-2470WV2GN1(ECO)
Combination type			24HP+26HP+36HP	26HP+26HP+36HP
Power supply	V/N/Hz		380-415/3/50(60)	380-415/3/50(60)
Cooling <sup>1</sup>	Capacity	kW	241.0	247.0
		kBtu/h	822.3	842.8
	Power input	kW	75.4	77.4
	EER		3.20	3.19
Heating <sup>2</sup>	Capacity	kW	268.5	275.0
		kBtu/h	916.2	938.4
	Power input	kW	74.7	76.7
	COP		3.59	3.59
Connected indoor unit	Total capacity		50-130%	50-130%
	Max. quantity		64	64
Compressors	Type		DC inverter	DC inverter
	Quantity		6	6
Fan motors	Type		DC	DC
	Quantity		6	6
	Airflow rate	m <sup>3</sup> /h	72000	72000
	Max. ESP	Pa	0-20 (standard) 20-80 (customized)	0-20 (standard) 20-80 (customized)
Refrigerant	Type		R410A	R410A
	Factory charge	kg	12x2+21	12x2+21
Pipe connections <sup>3</sup>	Liquid pipe	mm	Ø22.2	Ø22.2
	Gas pipe	mm	Ø50.8	Ø50.8
Sound pressure level <sup>4</sup>		dB(A)	69	69
Net dimensions (WxHxD)		mm	(1340x1760x825)×2+ (1880x1760x825)	(1340x1760x825)×2+ (1880x1760x825)
Packed dimensions (WxHxD)		mm	(1410x1945x890)×2+ (1935x1945x890)	(1410x1945x890)×2+ (1935x1945x890)
Net weight		kg	315x2+406	315x2+406
Gross weight		kg	335x2+436	335x2+436
Ambient temp. operation range	Cooling	°C(DB)	-15 to 55	-15 to 55
	Heating	°C(DB)	-30 to 30	-30 to 30

HP			90	92
Model name (Combination unit)			MV8-2520WV2GN1(ECO)	MV8-2580WV2GN1(ECO)
Combination type			18HP+36HP+36HP	20HP+36HP+36HP
Power supply	V/N/Hz		380-415/3/50(60)	380-415/3/50(60)
Cooling <sup>1</sup>	Capacity	kW	252.0	258.0
		kBtu/h	859.8	880.3
	Power input	kW	83.6	85.9
	EER		3.01	3.00
Heating <sup>2</sup>	Capacity	kW	280.0	287.0
		kBtu/h	955.5	979.4
	Power input	kW	82.9	84.7
	COP		3.38	3.39
Connected indoor unit	Total capacity		50-130%	50-130%
	Max. quantity		64	64
Compressors	Type		DC inverter	DC inverter
	Quantity		5	6
Fan motors	Type		DC	DC
	Quantity		5	6
	Airflow rate	m <sup>3</sup> /h	74500	80000
	Max. ESP	Pa	0-20 (standard) 20-80 (customized)	0-20 (standard) 20-80 (customized)
Refrigerant	Type		R410A	R410A
	Factory charge	kg	8.4+21x2	9.3+21x2
Pipe connections <sup>3</sup>	Liquid pipe	mm	Ø25.4	Ø25.4
	Gas pipe	mm	Ø50.8	Ø50.8
Sound pressure level <sup>4</sup>		dB(A)	70	70
Net dimensions (WxHxD)		mm	(940x1760x825)+ (1880x1760x825)×2	(1340x1760x825)+ (1880x1760x825)×2
Packed dimensions (WxHxD)		mm	(1010x1945x890)+ (1935x1945x890)×2	(1410x1945x890)+ (1935x1945x890)×2
Net weight		kg	215+406x2	295+406x2
Gross weight		kg	232+436x2	315+436x2
Ambient temp. operation range	Cooling	°C(DB)	-15 to 55	-15 to 55
	Heating	°C(DB)	-30 to 30	-30 to 30

- Notes:
- Indoor temperature 27°C DB, 19°C WB; outdoor temperature 35°C DB; equivalent refrigerant piping length 7.5m with zero level difference.
  - Indoor temperature 20°C DB; outdoor temperature 7°C DB, 6°C WB; equivalent refrigerant piping length 7.5m with zero level difference.
  - Diameters given are those for the pipe connecting the outdoor unit combination to the first indoor branch joint for systems with total equivalent liquid piping lengths of less than 90m. For systems with total equivalent liquid piping lengths of 90m or longer, please refer to the V8 Series Engineering Data Book for connection piping diameters.
  - Sound pressure level is measured at a position 1m in front of the unit and 1.3m above the floor in a semi-anechoic chamber.

# Specifications

## V8 (Combinable series)

HP			94	96	
Model name (Combination unit)			MV8- 2635WV2GN1(ECO)	MV8- 2690WV2GN1(ECO)	
Combination type			22HP+36HP+36HP	24HP+36HP+36HP	
Power supply			380-415/3/50(60)	380-415/3/50(60)	
Cooling <sup>1</sup>	Capacity	kW	263.5	269.0	
		kBtu/h	899.0	917.8	
	Power input	kW	88.7	89.8	
		EER	2.97	3.00	
Heating <sup>2</sup>	Capacity	kW	293.0	299.0	
		kBtu/h	999.8	1020.3	
	Power input	kW	87.0	88.4	
		COP	3.37	3.38	
Connected indoor unit	Total capacity		50-130%	50-130%	
	Max. quantity		64	64	
Compressors	Type		DC inverter	DC inverter	
	Quantity		6	6	
Fan motors	Type		DC	DC	
		Quantity		6	6
	Airflow rate	m <sup>3</sup> /h		80000	79500
		Max. ESP	Pa	0-20 (standard) 20-80 (customized)	0-20 (standard) 20-80 (customized)
Refrigerant	Type		R410A	R410A	
	Factory charge	kg	9.3+21×2	12+21×2	
Pipe connections <sup>3</sup>	Liquid pipe	mm	ø25.4	ø25.4	
	Gas pipe	mm	ø50.8	ø50.8	
Sound pressure level <sup>4</sup>		dB(A)	70	70	
Net dimensions (W×H×D)		mm	(1340×1760×825)+ (1880×1760×825)×2	(1340×1760×825)+ (1880×1760×825)×2	
Packed dimensions (W×H×D)		mm	(1410×1945×890)+ (1935×1945×890)×2	(1410×1945×890)+ (1935×1945×890)×2	
Net weight		kg	295+406×2	315+406×2	
Gross weight		kg	315+436×2	335+436×2	
Ambient temp. operation range	Cooling	°C(DB)	-15 to 55	-15 to 55	
	Heating	°C(DB)	-30 to 30	-30 to 30	

HP			98	100	
Model name (Combination unit)			MV8- 2750WV2GN1(ECO)	MV8- 2805WV2GN1(ECO)	
Combination type			26HP+36HP+36HP	28HP+36HP+36HP	
Power supply			380-415/3/50(60)	380-415/3/50(60)	
Cooling <sup>1</sup>	Capacity	kW	275.0	280.5	
		kBtu/h	938.3	957.1	
	Power input	kW	91.8	94.8	
		EER	3.00	2.96	
Heating <sup>2</sup>	Capacity	kW	305.5	311.5	
		kBtu/h	1042.5	1063.0	
	Power input	kW	90.4	93.6	
		COP	3.38	3.33	
Connected indoor unit	Total capacity		50-130%	50-130%	
	Max. quantity		64	64	
Compressors	Type		DC inverter	DC inverter	
	Quantity		6	6	
Fan motors	Type		DC	DC	
		Quantity		6	6
	Airflow rate	m <sup>3</sup> /h		79500	87000
		Max. ESP	Pa	0-20 (standard) 20-80 (customized)	0-20 (standard) 20-80 (customized)
Refrigerant	Type		R410A	R410A	
	Factory charge	kg	12+21×2	19+21×2	
Pipe connections <sup>3</sup>	Liquid pipe	mm	ø25.4	ø25.4	
	Gas pipe	mm	ø50.8	ø50.8	
Sound pressure level <sup>4</sup>		dB(A)	70	70	
Net dimensions (W×H×D)		mm	(1340×1760×825)+ (1880×1760×825)×2	(1880×1760×825)×3	
Packed dimensions (W×H×D)		mm	(1410×1945×890)+ (1935×1945×890)×2	(1935×1945×890)×3	
Net weight		kg	315+406×2	373+406×2	
Gross weight		kg	335+436×2	403+436×2	
Ambient temp. operation range	Cooling	°C(DB)	-15 to 55	-15 to 55	
	Heating	°C(DB)	-30 to 30	-30 to 30	

### Notes:

- Indoor temperature 27°C DB, 19°C WB; outdoor temperature 35°C DB; equivalent refrigerant piping length 7.5m with zero level difference.
- Indoor temperature 20°C DB; outdoor temperature 7°C DB, 6°C WB; equivalent refrigerant piping length 7.5m with zero level difference.
- Diameters given are those for the pipe connecting the outdoor unit combination to the first indoor branch joint for systems with total equivalent liquid piping lengths of less than 90m. For systems with total equivalent liquid piping lengths of 90m or longer, please refer to the V8 Series Engineering Data Book for connection piping diameters.
- Sound pressure level is measured at a position 1m in front of the unit and 1.3m above the floor in a semi-anechoic chamber.

HP			102	104	
Model name (Combination unit)			MV8- 2860WV2GN1(ECO)	MV8- 2920WV2GN1(ECO)	
Combination type			32HP+34HP+36HP	32HP+36HP+36HP	
Power supply			380-415/3/50(60)	380-415/3/50(60)	
Cooling <sup>1</sup>	Capacity	kW	286.2	292.0	
		kBtu/h	975.9	996.3	
	Power input	kW	98.1	101.0	
		EER	2.92	2.89	
Heating <sup>2</sup>	Capacity	kW	318.0	324.0	
		kBtu/h	1085.1	1105.6	
	Power input	kW	97.1	99.6	
		COP	3.27	3.25	
Connected indoor unit	Total capacity		50-130%	50-130%	
	Max. quantity		64	64	
Compressors	Type		DC inverter	DC inverter	
	Quantity		6	6	
Fan motors	Type		DC	DC	
		Quantity		6	6
	Airflow rate	m <sup>3</sup> /h		86000	86000
		Max. ESP	Pa	0-20 (standard) 20-80 (customized)	0-20 (standard) 20-80 (customized)
Refrigerant	Type		R410A	R410A	
	Factory charge	kg	21×3	21×3	
Pipe connections <sup>3</sup>	Liquid pipe	mm	ø25.4	ø25.4	
	Gas pipe	mm	ø50.8	ø50.8	
Sound pressure level <sup>4</sup>		dB(A)	70	70	
Net dimensions (W×H×D)		mm	(1880×1760×825)×3	(1880×1760×825)×3	
Packed dimensions (W×H×D)		mm	(1935×1945×890)×3	(1935×1945×890)×3	
Net weight		kg	405+406×2	405+406×2	
Gross weight		kg	435+436×2	435+436×2	
Ambient temp. operation range	Cooling	°C(DB)	-15 to 55	-15 to 55	
	Heating	°C(DB)	-30 to 30	-30 to 30	

HP			106	108	
Model name (Combination unit)			MV8- 2970WV2GN1(ECO)	MV8- 3030WV2GN1(ECO)	
Combination type			34HP+36HP+36HP	36HP+36HP+36HP	
Power supply			380-415/3/50(60)	380-415/3/50(60)	
Cooling <sup>1</sup>	Capacity	kW	297.2	303.0	
		kBtu/h	1013.4	1033.8	
	Power input	kW	103.3	106.2	
		EER	2.88	2.85	
Heating <sup>2</sup>	Capacity	kW	330.0	336.0	
		kBtu/h	1126.1	1146.6	
	Power input	kW	101.6	104.1	
		COP	3.25	3.23	
Connected indoor unit	Total capacity		50-130%	50-130%	
	Max. quantity		64	64	
Compressors	Type		DC inverter	DC inverter	
	Quantity		6	6	
Fan motors	Type		DC	DC	
		Quantity		6	6
	Airflow rate	m <sup>3</sup> /h		87000	87000
		Max. ESP	Pa	0-20 (standard) 20-80 (customized)	0-20 (standard) 20-80 (customized)
Refrigerant	Type		R410A	R410A	
	Factory charge	kg	21×3	21×3	
Pipe connections <sup>3</sup>	Liquid pipe	mm	ø25.4	ø25.4	
	Gas pipe	mm	ø50.8	ø50.8	
Sound pressure level <sup>4</sup>		dB(A)	71	71	
Net dimensions (W×H×D)		mm	(1880×1760×825)×3	(1880×1760×825)×3	
Packed dimensions (W×H×D)		mm	(1935×1945×890)×3	(1935×1945×890)×3	
Net weight		kg	406×3	406×3	
Gross weight		kg	436×3	436×3	
Ambient temp. operation range	Cooling	°C(DB)	-15 to 55	-15 to 55	
	Heating	°C(DB)	-30 to 30	-30 to 30	

### Notes:

- Indoor temperature 27°C DB, 19°C WB; outdoor temperature 35°C DB; equivalent refrigerant piping length 7.5m with zero level difference.
- Indoor temperature 20°C DB; outdoor temperature 7°C DB, 6°C WB; equivalent refrigerant piping length 7.5m with zero level difference.
- Diameters given are those for the pipe connecting the outdoor unit combination to the first indoor branch joint for systems with total equivalent liquid piping lengths of less than 90m. For systems with total equivalent liquid piping lengths of 90m or longer, please refer to the V8 Series Engineering Data Book for connection piping diameters.
- Sound pressure level is measured at a position 1m in front of the unit and 1.3m above the floor in a semi-anechoic chamber.

# Specifications

## V8i (Individual series)

HP			8	10	12	14
Model name			MV8i-252WV2GN1(ECO)	MV8i-280WV2GN1(ECO)	MV8i-335WV2GN1(ECO)	MV8i-400WV2GN1(ECO)
Power supply			V/N/Hz 380-415/3/50(60)	380-415/3/50(60)	380-415/3/50(60)	380-415/3/50(60)
Cooling <sup>1</sup>	Capacity	kW	25.2	28.0	33.5	40.0
		kBtu/h	86.0	95.5	114.3	136.5
	Power input	kW	5.5	7.2	8.6	11.0
	EER		4.58	3.91	3.88	3.63
Heating <sup>2</sup>	Capacity	kW	27.0	31.5	37.5	45.0
		kBtu/h	92.1	107.5	128.0	153.5
	Power input	kW	5.7	7.0	9.1	11.6
	COP		4.77	4.49	4.14	3.89
Connected indoor unit	Total capacity		50%-130%	50%-130%	50%-130%	50%-130%
	Maximum quantity		13	16	19	23
Compressors	Type		DC inverter	DC inverter	DC inverter	DC inverter
	Quantity		1	1	1	1
Fan motors	Type		DC	DC	DC	DC
	Quantity		1	1	1	1
	Airflow rate	m <sup>3</sup> /h	12600	12600	13500	14400
	Max. ESP	Pa	0-20 (standard) 20-80 (customized)	0-20 (standard) 20-80 (customized)	0-20 (standard) 20-80 (customized)	0-20 (standard) 20-80 (customized)
Refrigerant	Type		R410A	R410A	R410A	R410A
	Factory charge	kg	7	7	7	7
Pipe connections <sup>3</sup>	Liquid pipe	mm	Ø12.7	Ø12.7	Ø12.7	Ø12.7
	Gas pipe	mm	Ø25.4	Ø25.4	Ø25.4	Ø25.4
Sound pressure level <sup>4</sup>		dB(A)	56	57	59	59
Net dimensions (WxHxD)		mm	940x1760x825	940x1760x825	940x1760x825	940x1760x825
Packed dimensions (WxHxD)		mm	1010x1945x890	1010x1945x890	1010x1945x890	1010x1945x890
Net weight		kg	195	195	195	197
Gross weight		kg	213	213	213	215
Ambient temp. operation range	Cooling	°C(DB)	-15 to 55	-15 to 55	-15 to 55	-15 to 55
	Heating	°C(DB)	-30 to 30	-30 to 30	-30 to 30	-30 to 30

HP			16	18	20	22
Model name			MV8i-450WV2GN1(ECO)	MV8i-500WV2GN1(ECO)	MV8i-560WV2GN1(ECO)	MV8i-615WV2GN1(ECO)
Power supply			V/N/Hz 380-415/3/50(60)	380-415/3/50(60)	380-415/3/50(60)	380-415/3/50(60)
Cooling <sup>1</sup>	Capacity	kW	45.0	50.0	56.0	61.5
		kBtu/h	153.5	170.6	191.1	209.8
	Power input	kW	12.6	14.3	16.5	18.9
	EER		3.57	3.50	3.39	3.26
Heating <sup>2</sup>	Capacity	kW	50.0	56.0	63.0	69.0
		kBtu/h	170.6	191.1	215.0	235.4
	Power input	kW	12.8	14.6	16.7	19.1
	COP		3.91	3.83	3.77	3.61
Connected indoor unit	Total capacity		50%-130%	50%-130%	50%-130%	50%-130%
	Maximum quantity		26	29	33	36
Compressors	Type		DC inverter	DC inverter	DC inverter	DC inverter
	Quantity		1	1	2	2
Fan motors	Type		DC	DC	DC	DC
	Quantity		1	1	2	2
	Airflow rate	m <sup>3</sup> /h	15600	16500	22000	22000
	Max. ESP	Pa	0-20 (standard) 20-80 (customized)	0-20 (standard) 20-80 (customized)	0-20 (standard) 20-80 (customized)	0-20 (standard) 20-80 (customized)
Refrigerant	Type		R410A	R410A	R410A	R410A
	Factory charge	kg	8	8.4	9.3	9.3
Pipe connections <sup>3</sup>	Liquid pipe	mm	Ø15.9	Ø15.9	Ø15.9	Ø15.9
	Gas pipe	mm	Ø28.6	Ø28.6	Ø28.6	Ø28.6
Sound pressure level <sup>4</sup>		dB(A)	60	61	62	62
Net dimensions (WxHxD)		mm	940x1760x825	940x1760x825	1340x1760x825	1340x1760x825
Packed dimensions (WxHxD)		mm	1010x1945x890	1010x1945x890	1410x1945x890	1410x1945x890
Net weight		kg	213	215	295	295
Gross weight		kg	230	232	315	315
Ambient temp. operation range	Cooling	°C(DB)	-15 to 55	-15 to 55	-15 to 55	-15 to 55
	Heating	°C(DB)	-30 to 30	-30 to 30	-30 to 30	-30 to 30

Notes:  
 1. Indoor temperature 27°C DB, 19°C WB; outdoor temperature 35°C DB; equivalent refrigerant piping length 7.5m with zero level difference.  
 2. Indoor temperature 20°C DB; outdoor temperature 7°C DB, 6°C WB; equivalent refrigerant piping length 7.5m with zero level difference.  
 3. Diameters given are those of the unit's stop valves.  
 4. Sound pressure level is measured at a position 1m in front of the unit and 1.3m above the floor in a semi-anechoic chamber.

HP			24	26	28	30
Model name			MV8i-670WV2GN1(ECO)	MV8i-730WV2GN1(ECO)	MV8i-785WV2GN1(ECO)	MV8i-850WV2GN1(ECO)
Power supply			V/N/Hz 380-415/3/50(60)	380-415/3/50(60)	380-415/3/50(60)	380-415/3/50(60)
Cooling <sup>1</sup>	Capacity	kW	67.0	73.0	78.5	85.0
		kBtu/h	228.6	249.1	267.9	290.0
	Power input	kW	20.9	23.0	24.9	27.5
	EER		3.20	3.18	3.15	3.09
Heating <sup>2</sup>	Capacity	kW	75.0	81.5	87.5	95.0
		kBtu/h	255.9	278.1	298.6	324.2
	Power input	kW	21.3	22.8	26.1	29.1
	COP		3.52	3.57	3.35	3.26
Connected indoor unit	Total capacity		50%-130%	50%-130%	50%-130%	50%-130%
	Maximum quantity		39	43	46	50
Compressors	Type		DC inverter	DC inverter	DC inverter	DC inverter
	Quantity		2	2	2	2
Fan motors	Type		DC	DC	DC	DC
	Quantity		2	2	2	2
	Airflow rate	m <sup>3</sup> /h	21500	21500	29000	28000
	Max. ESP	Pa	0-20 (standard) 20-80 (customized)	0-20 (standard) 20-80 (customized)	0-20 (standard) 20-80 (customized)	0-20 (standard) 20-80 (customized)
Refrigerant	Type		R410A	R410A	R410A	R410A
	Factory charge	kg	9.3	12	19	21
Pipe connections <sup>3</sup>	Liquid pipe	mm	Ø15.9	Ø15.9	Ø22.2	Ø22.2
	Gas pipe	mm	Ø28.6	Ø28.6	Ø31.8	Ø34.9
Sound pressure level <sup>4</sup>		dB(A)	62	62	63	64
Net dimensions (WxHxD)		mm	1340x1760x825	1340x1760x825	1880x1760x825	1880x1760x825
Packed dimensions (WxHxD)		mm	1410x1945x890	1410x1945x890	1935x1945x890	1935x1945x890
Net weight		kg	300	315	405	405
Gross weight		kg	320	335	403	435
Ambient temp. operation range	Cooling	°C(DB)	-15 to 55	-15 to 55	-15 to 55	-15 to 55
	Heating	°C(DB)	-30 to 30	-30 to 30	-30 to 30	-30 to 30

HP			32	34	36
Model name			MV8i-900WV2GN1(ECO)	MV8i-950WV2GN1(ECO)	MV8i-1010WV2GN1(ECO)
Power supply			V/N/Hz 380-415/3/50(60)	380-415/3/50(60)	380-415/3/50(60)
Cooling <sup>1</sup>	Capacity	kW	90.0	95.2	101.0
		kBtu/h	307.1	324.2	344.6
	Power input	kW	31.5	33.9	36.3
	EER		2.86	2.81	2.78
Heating <sup>2</sup>	Capacity	kW	100.0	106.0	112.0
		kBtu/h	341.2	361.7	382.2
	Power input	kW	31.1	33.5	36.0
	COP		3.22	3.16	3.11
Connected indoor unit	Total capacity		50%-130%	50%-130%	50%-130%
	Maximum quantity		53	56	59
Compressors	Type		DC inverter	DC inverter	DC inverter
	Quantity		2	2	2
Fan motors	Type		DC	DC	DC
	Quantity		2	2	2
	Airflow rate	m <sup>3</sup> /h	28000	29000	29000
	Max. ESP	Pa	0-20 (standard) 20-80 (customized)	0-20 (standard) 20-80 (customized)	0-20 (standard) 20-80 (customized)
Refrigerant	Type		R410A	R410A	R410A
	Factory charge	kg	21	21	21
Pipe connections <sup>3</sup>	Liquid pipe	mm	Ø22.2	Ø22.2	Ø22.2
	Gas pipe	mm	Ø34.9	Ø34.9	Ø34.9
Sound pressure level <sup>4</sup>		dB(A)	64	66	66
Net dimensions (WxHxD)		mm	1880x1760x825	1880x1760x825	1880x1760x825
Packed dimensions (WxHxD)		mm	1935x1945x890	1935x1945x890	1935x1945x890
Net weight		kg	405	406	406
Gross weight		kg	435	436	436
Ambient temp. operation range	Cooling	°C(DB)	-15 to 55	-15 to 55	-15 to 55
	Heating	°C(DB)	-30 to 30	-30 to 30	-30 to 30

Notes:  
 1. Indoor temperature 27°C DB, 19°C WB; outdoor temperature 35°C DB; equivalent refrigerant piping length 7.5m with zero level difference.  
 2. Indoor temperature 20°C DB; outdoor temperature 7°C DB, 6°C WB; equivalent refrigerant piping length 7.5m with zero level difference.  
 3. Diameters given are those of the unit's stop valves.  
 4. Sound pressure level is measured at a position 1m in front of the unit and 1.3m above the floor in a semi-anechoic chamber.